



Città di Imola



Europe
for Citizens

PROJECT AGE

Active Citizens for Europe

Informazioni sul soggetto partecipante

Libraries and Archives Services, have different locations in Imola: Council Central Library, Children Library Casa Piani, historical municipality Archive and three county libraries in Ponticelli, Sasso Morelli and Sesto Imolese

The Council Central Library, the so called **BIM**, is a **public library** that has the task to preserve, to uphold and to value the bibliographic heritage, especially that tied to the memory of the district of Imola. The Library buys books on all branches of knowledge, multimedias (CDs DVDs, audio books, cd-roms).

It preserves archive groups and remarkable historical collections, most of them of local interest.

The Library is a cultural and studying place, it organizes conferences, meetings, exhibitions, guided tours, it prints some own books and interacts with schools for some didactic works.

The library's heritage consists of more than 480,000 documents (of which 80,000 before 1831), increased every year by 4,100 new purchases (that is books, newspapers, magazines, CDs and DVDs). The current records are available on the shelves.

Informazioni sulle attività svolte che sono riconducibili al Project AGE

Nowadays scholars and politicians are trying to examine social and economic implications of the progressively ageing Italian population.

Due to socio-demographic implications, Emilia-Romagna has a higher ageing rate than the national average. Compared to the whole national population, older people (from 65 to upward) are about 20%; whereas in Emilia-Romagna they are 23,2%. Furthermore, in Imola the over 65s are almost a fourth of the population (25,7% female and 21% male).

These simple and essential demographic considerations, are the reasons why the library, for the last few years, has chosen to promote culture through different strategies.

To the traditional reading promotion addressed to children and teenagers, the library offers new initiatives, directed to specific targets: youths, women, immigrants and old people.

Since 2001, the new open-shelf collection has become a place to meet, to take a break, to read, and offers, to the citizens of all ages, the possibility of information and amusement in an adequate space.

Nowadays there are a lot of over-sixties that come to the library to read newspapers, or to consult or borrow books, CDs and DVDs, or to do researches in the archive, or to attend guided tours, or initiatives organized by the library itself.

Up to 31/12/2012, there were 1,315 users between 61 and 110, enrolled in the town's libraries. Of these, 1,098 have borrowed 27,871 books, which represent 24.71% of the whole annual loans recorded in 2012.

On the other hand, there are many over-sixties that don't know the advantages that the library can offer to retired people. That's why some initiatives were planned.

In 2003 on the occasion of the meeting "Semplicemente...anziani", supported by the local

Administration, the library printed the booklet *“Signorilmente in biblioteca: suggerimenti di lettura per la terza età”*.

Both BIM and Children Library (which has 105 users between 61 and 110), regularly make lists of bibliographic suggestions.

Moreover BIM buys books in big type-sizes (type-size 16 e 18), and audio-books that allow the listening of the reading of the main masterpieces of Italian and foreign literature.



Since January 2007, just to continue to promote the library, a new project started: *“La biblioteca mantiene giovani”*, supported by the Cultural and the Social Quality Departments of the Municipality of Imola. This project was (and still is) achieved by the library and by the Social Ageing Advancement and consists of a group of events for the over-65s in BIM, such as promoting reading and in depth analysis of writers, novels, essays, historical or musical archives.

To increase the cultural promotion and the fruition of the Cultural Institutes of the town, the Libraries take advantage of some aged people to carry out some auxiliary services.

These tasks consist of: doorman and janitor to the cultural heritages, to cooperate to the physical material treatments (pigeonhole, magnetize and tidy up newspapers and magazines; pigeonhole and cover books; repair and tidy up toys) and to support the librarians

during the extra opening hours.

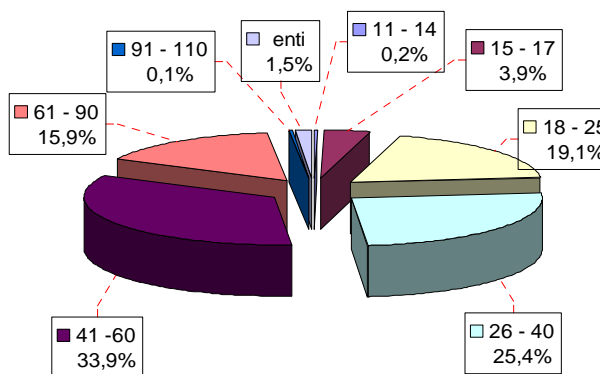
These activities are carried out by 8 retired people (over 50s); they work together for a total of 75 hours per week.

Servizi bibliotecari ed archivistici del Comune di Imola Dati statistici 2012

- 11.743 iscritti al prestito* di cui 2.829 bambini e ragazzi (pari al 24% del totale) e 342 enti
- 175.560 prestiti locali di cui 47.704 multimediali (pari al 27,17 % del totale)
- 663 prestiti tra biblioteche
- 62.449 informazioni in sede (di cui 3.454 sulle collezioni rare e archivistiche)
- 232.623 presenze (214.086 ingressi rilevati nelle settimane campione + 18.537 partecipanti alle iniziative)
- 10 postazioni Internet (4 BIM, 3 CP, 2 SI, 1 PO)
- 46.455 connessioni (di cui 35.284 wi-fi)
- 285 iniziative di promozione del libro e della lettura
- 352 classi in visita
- 6.234 acquisti di libri, giochi, cd, multimediale
- 393 periodici correnti (di cui 79 ricevuti in dono)
- 2.109 mq al pubblico
- 401 posti disponibili
- 138 ore di apertura settimanale invernale al pubblico (52 BIM nuovo orario dal 19/11/2012 + 39,5 CP + 26,5 SI + 5 SM + 15 PO) su 5 sedi

*Nel corso del **2012** sono stati 6.766 gli utenti iscritti al prestito della Biblioteca comunale di Imola, ai quali vanno sommati i 3.184 utenti della Sezione ragazzi Casa Piani, gli altri 1.341 delle Biblioteche decentrate di Ponticelli, Sesto Imolese e Sasso Morelli e i 342 enti che hanno fruito del prestito. Nella tabella la suddivisione per fasce d'età degli iscritti al servizio di prestito di **Bim** e **Casa Piani**:

Fascia d'età BIM	
11 - 14	14
15 - 17	269
18 - 25	1.312
26 - 40	1.746
41 - 60	2.327
61 - 90	1.090
91 - 110	8
enti	299
Totale	7.065



Fascia d'età CP	
0-5	434
06-08	536
09 - 10	394
11 - 14	760
15 - 17	173
18 - 25	123
26 - 40	286
41 - 60	373
61 - 90	105
enti	11
Totale	3.195

